

SDI-IPC Series

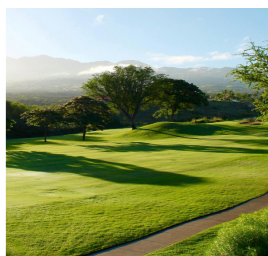
Revolutionizing 3G-SDI through IP Control

Immerse yourself in the realm of IP control with our groundbreaking camera series - introducing the SDI IPC Series. Combining our signature small form factor, unbeatable pricing, and unparalleled imaging quality, the SDI-IPC series cameras harness the power of full VISCA over IP control across any network, providing an easier alternative to the prior RS485 Serial Visca. Available in four distinct variations, the SDI-IPC series stands poised to revolutionize both new and established 3G-SDI setups, offering complete mastery over every aspect. Experience the future of control and elevate your streaming game with the SDI IPC Series.

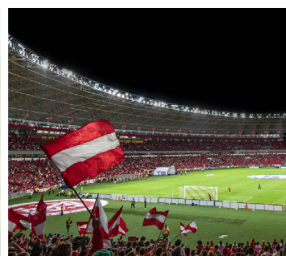


Model: HD3G-IPC-100A

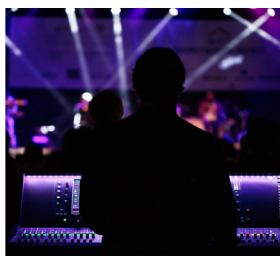
APPLICATIONS:



LIVESTREAM EVENTS



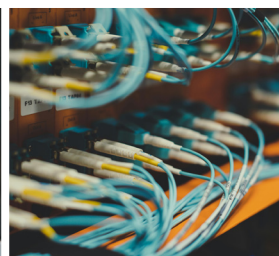
SPORTING EVENTS



INDOOR VENUES



SURVEILLANCE



EXISTING WORKFLOWS

*NDI® is a registered trademark of Newtek, Inc.

SDI-IPC Series Lineup:

AIDA
IMAGING

HD3G-IPC-100A



- Fits any C or CS Mount Interchangeable lens
- Standard discreet POV look
- 1/4 20" mounting on top and bottom
- **Best all around camera in the series!**

HD3G-IPC-IP67



- IP67 rated for weatherproof streaming
- CS Mount Interchangeable lens (4mm= \leq x lenses only / size)
- 3ft cabling to protect inputs
- 1/4 20" mounting on top and bottom
- **Best rugged weatherproof design in the series!**

HD3G-IPC-MINI



- IP67 rated for weatherproof streaming
- M12 Mount Interchangeable lens (3.6mm= \leq x lenses only / size)
- 3ft cabling to protect inputs
- 1/4 20" mounting on bottom only
- **Smallest form factor in the series!**

HD3G-IPC-TF



- IP54 rated for weatherproof streaming (no submersion)
- Varifocal lens, adjustable with hex tool. Can lock into place.
- 3ft cabling to protect inputs
- 1/4 20" mounting on top and bottom
- **Most versatile in the series!**

MAIN FEATURES

- Full-HD 1/2.8" Sony Progressive Scan CMOS sensor capable of 1080 60p through 3G-SDI
- VISCA over IP compatible for hardware and software solutions using that protocol. (VISCA UDP, SONY VISCA over IP)
- Versatile designs with tripod mounts for easy and unique shot creation.
- PoE+ adaptable with adapter (comes with purchase of the camera)
- Variants for weatherproofed cameras, capable of IPV54 and above rating.
- CS-mount lens, M12 mount lens, and varifocal weatherproof options available.
- Small form-factor and rugged designed makes all video streaming applications possible
- Perfectly suited for indoor or outdoor shots for new or existing workflows.

SPECIFICATIONS

VIDEO

Image Sensor	1/2.8" Progressive CMOS
Sensor Size	5.640mm x 3.216mm (16.9)
Effective Pixels	Horizontal: 1920, Vertical: 1080
Pixel Size	2.9 µm (H) x 2.9 µm (V)
Resolution	1080p, 1080i, 720p
Resolution Rate	1080 60p/59.94/50p/30p/29.97p/25p 24p 1080 60i/59.94i/50i 720 60p/59.94p/50p
Output	3G-SDI
Color Space	4:2:2 (YCbCr) 10bit
Min Illumination	0.2Lux (day), 0.1Lux (Night)
White Balance	Auto & Manual (9000 - 11,000 K)
Audio Input	3.5mm TRS Stereo Input, Embed over SDI

LENS

Lens	HD3G-IPC-100A - CS mount 4mm Lens HFOV: 80°
	HD3G-IPC-IP67 - CS mount 4mm Lens HFOV: 80°
	HD3G-IPC-MINI - M12 mount 3.6mm Lens HFOV: 92°
	HD3G-IPC-TF - Custom Varifocal 5-50mm Lens HFOV: Wide: 51° Tele'd: 6.1°

PHYSICAL

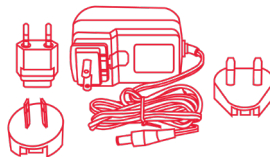
Camera Control	RJ45 (VISCA over IP) RS485 (Serial VISCA)
Operation Temp	-10°C~50°C
Power	12VDC (+9 - +15VDC) (PoE Adapter Included)
Power Draw	6W MAX

*Specification are subject to change without notice.

PACKAGE CONTENTS



PoE Dongle Adapter



DC 12v Power Supply & Sockets Adapter



**Lens Hex Adapter
(HD3G-IPC-TF Only)**

*NDI® is a registered trademark of Newtek, Inc.

At **AIDA Imaging**, innovation is key to crafting our tried and tested quality imaging solutions. We strive to raise the bar by engineering and manufacturing cutting edge cameras and converters. From concept to reality, **AIDA Imaging** meticulously creates products that are applicable to various solutions, effective for the global user.